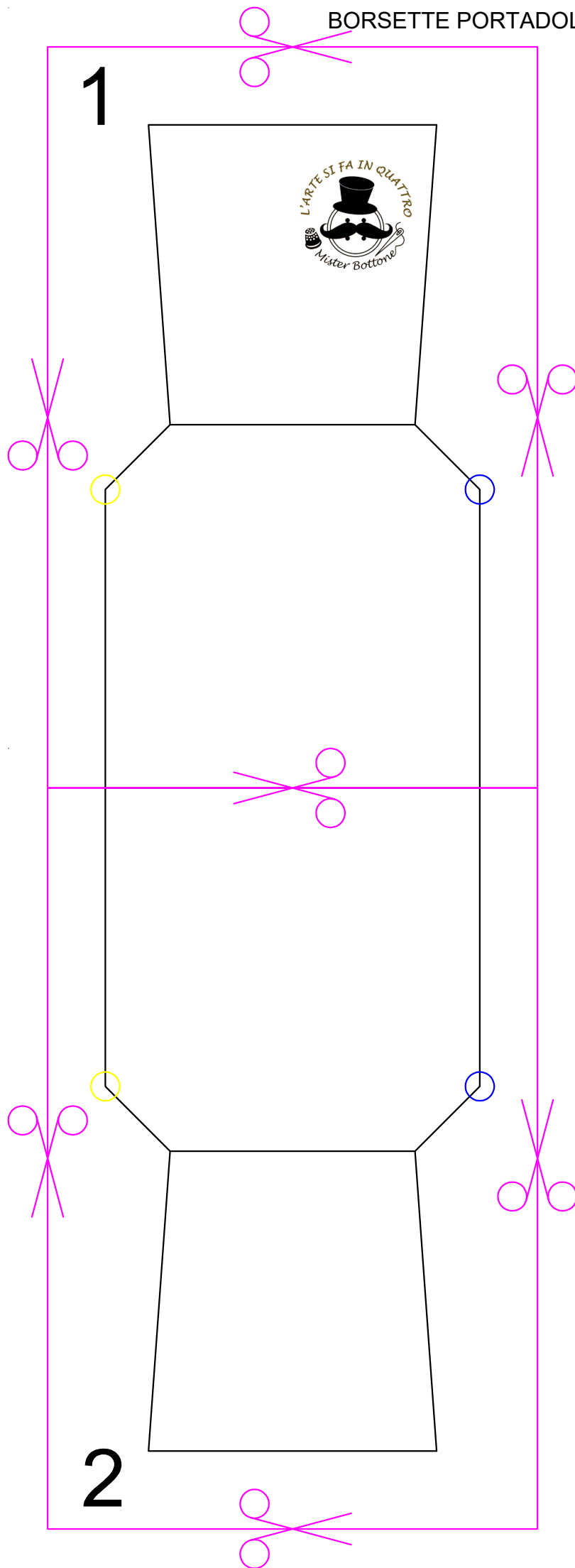


COME UNIRE
I CARTAMODELLI



BORSETTE PORTADOLCI DI HALLOWEEN

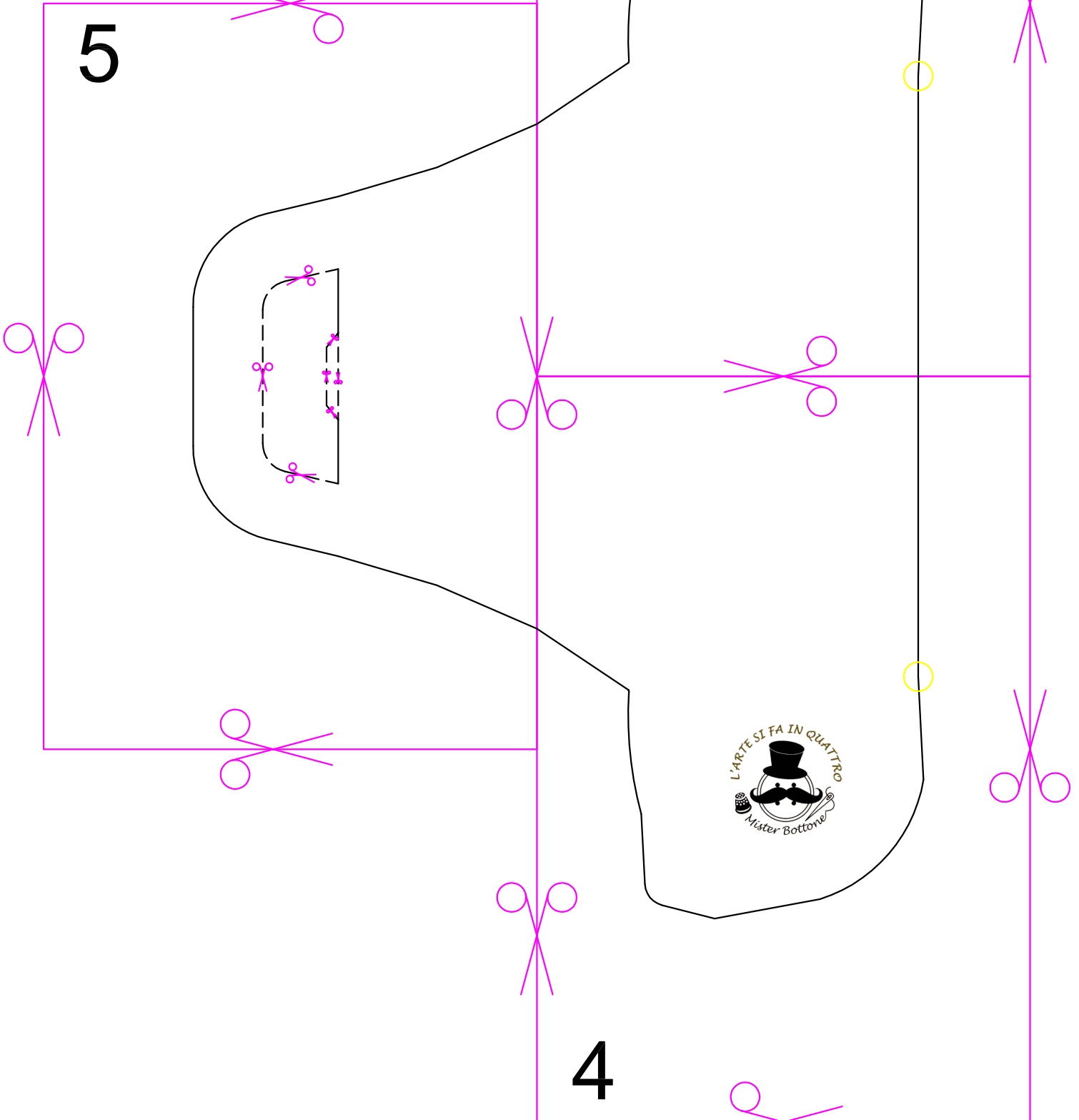
COME UNIRE
I CARTAMODELLI



5

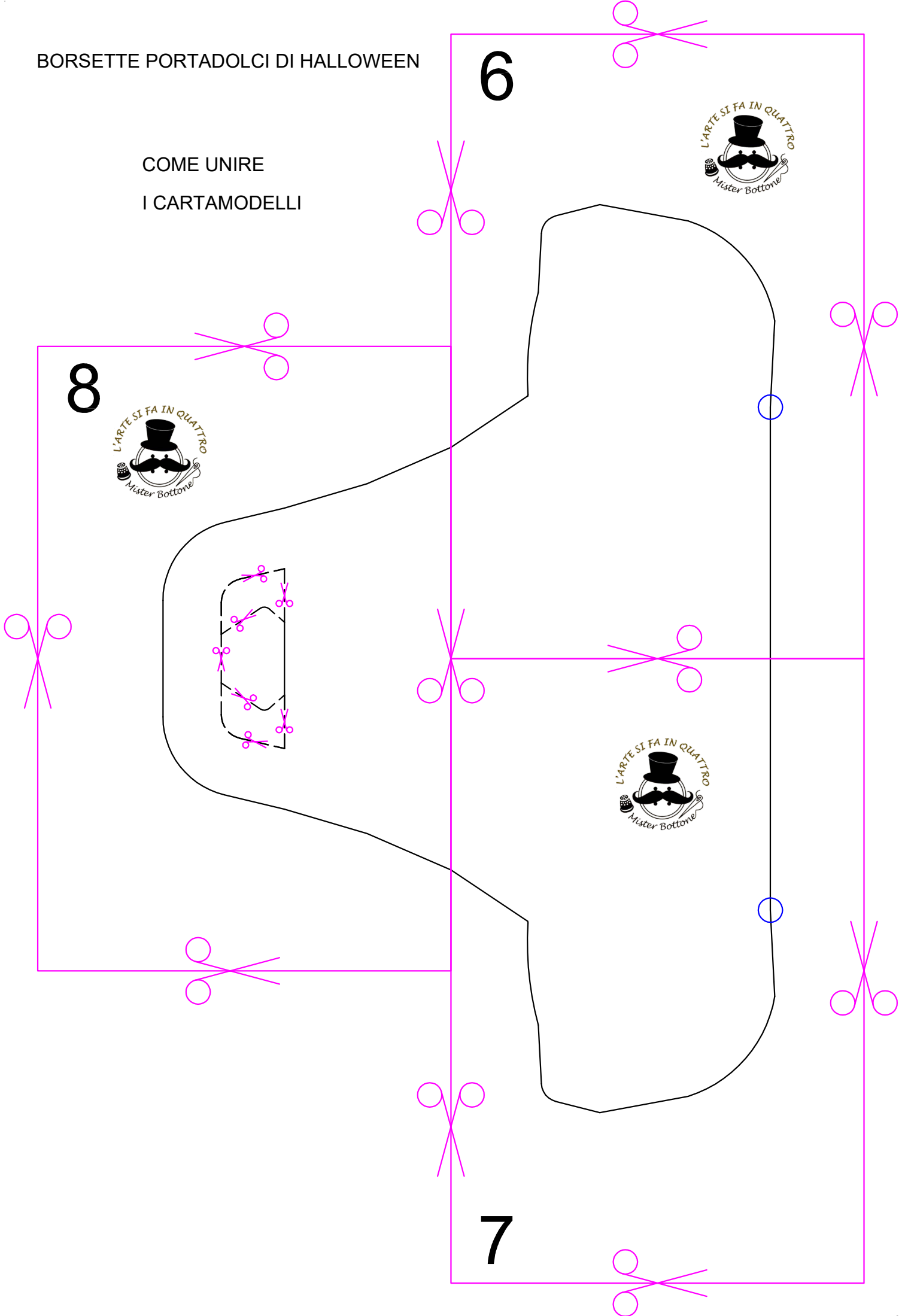
3

4



BORSETTE PORTADOLCI DI HALLOWEEN

COME UNIRE
I CARTAMODELLI



6



8



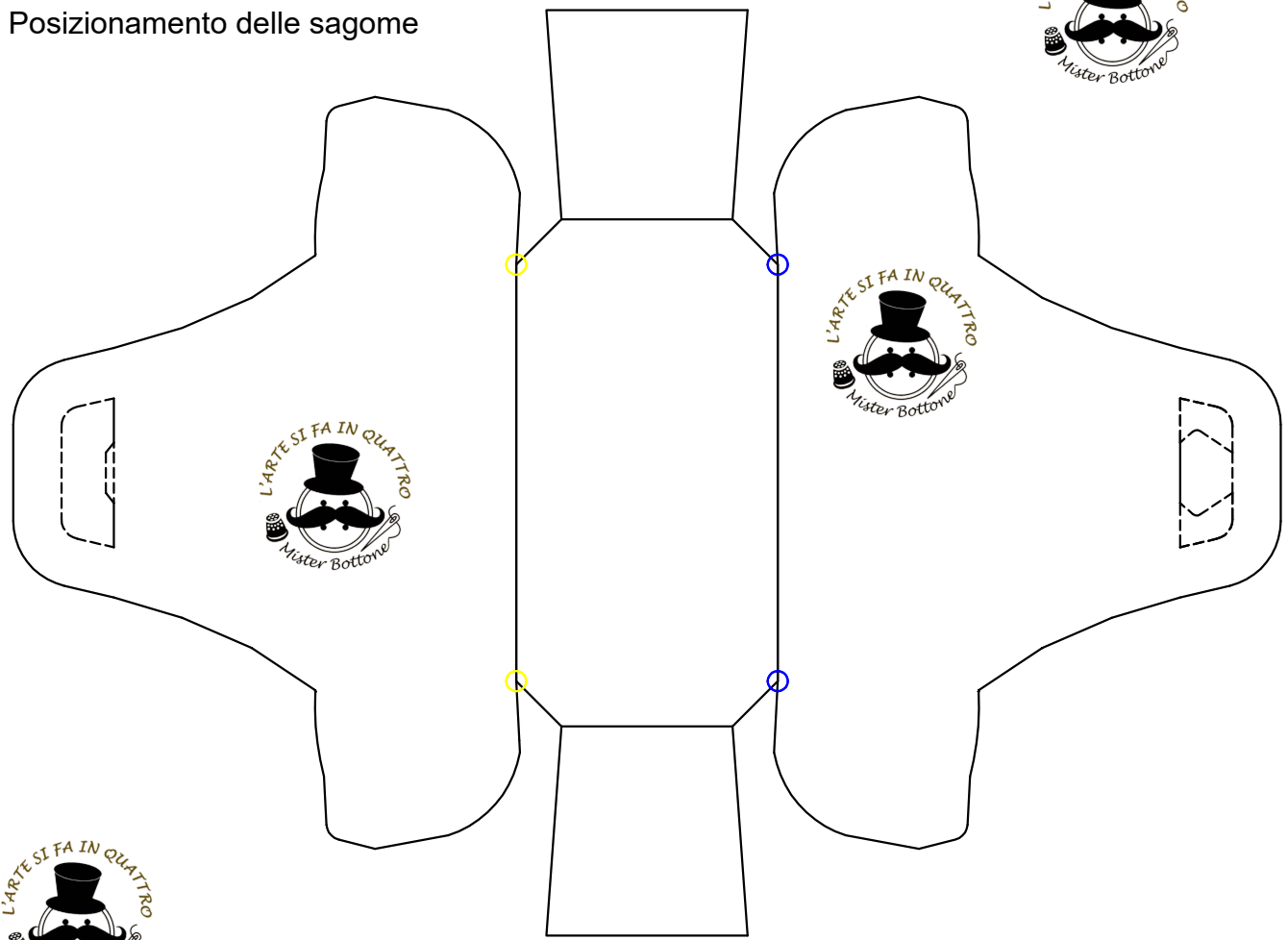
7



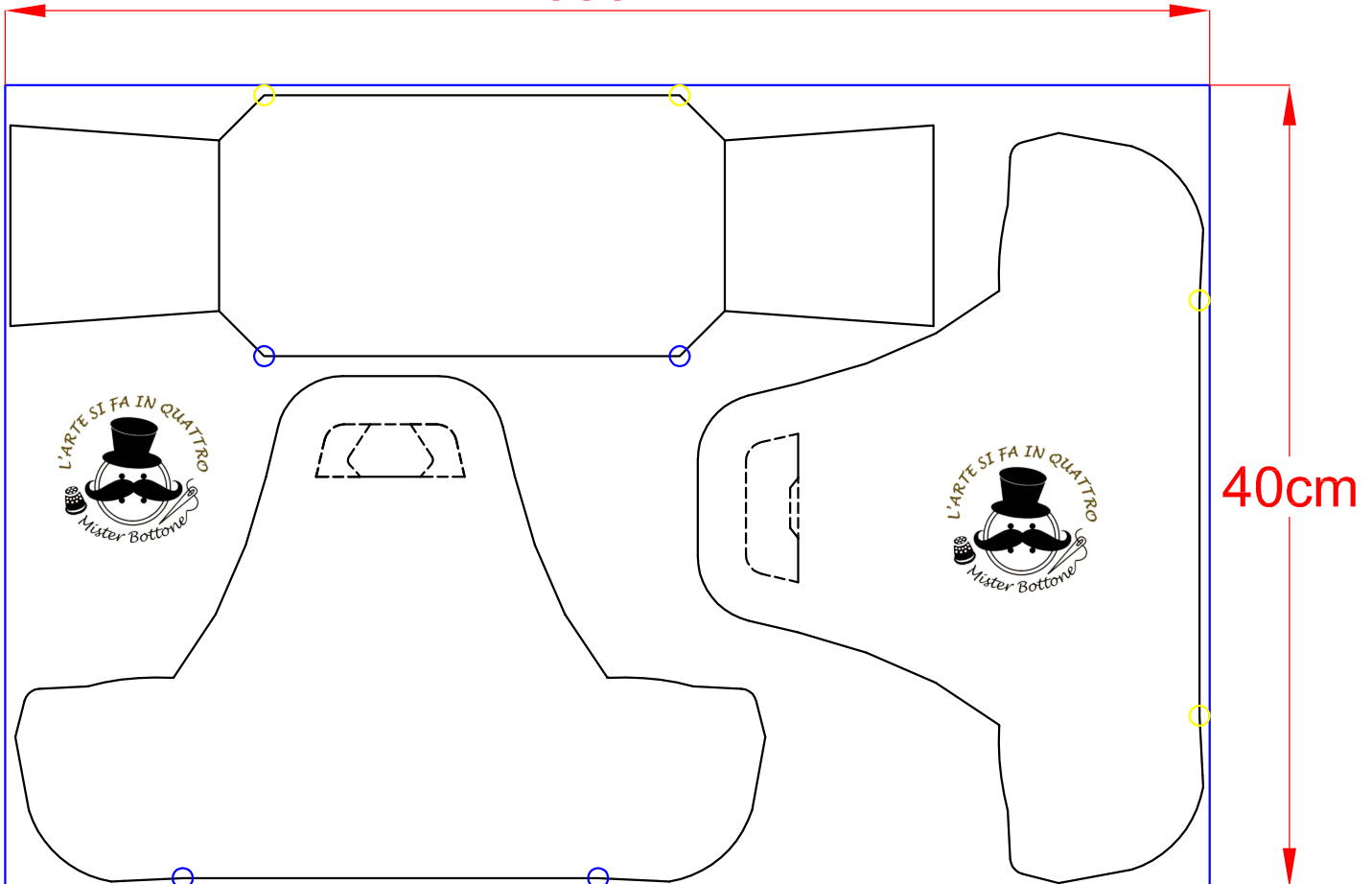
BORSETTE PORTADOLCI DI HALLOWEEN



Posizionamento delle sagome



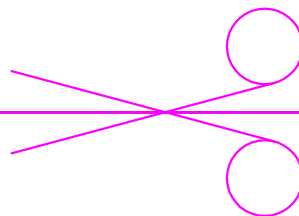
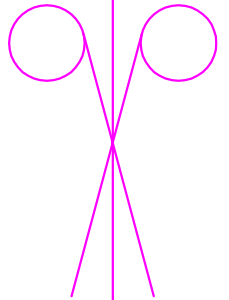
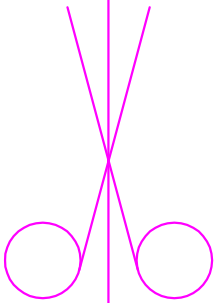
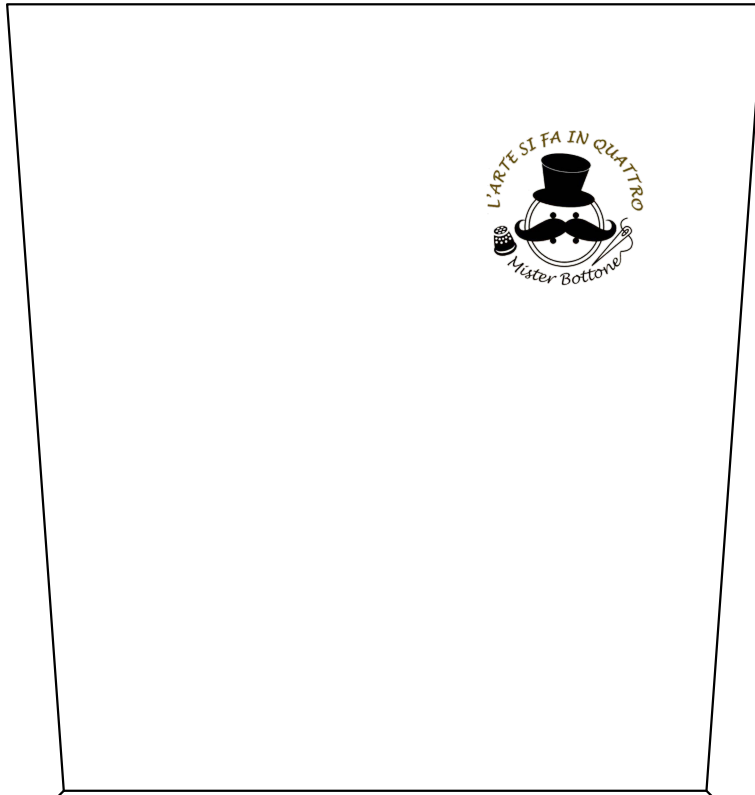
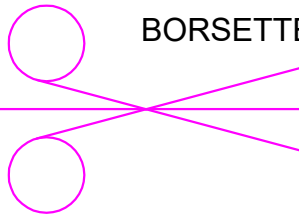
60cm

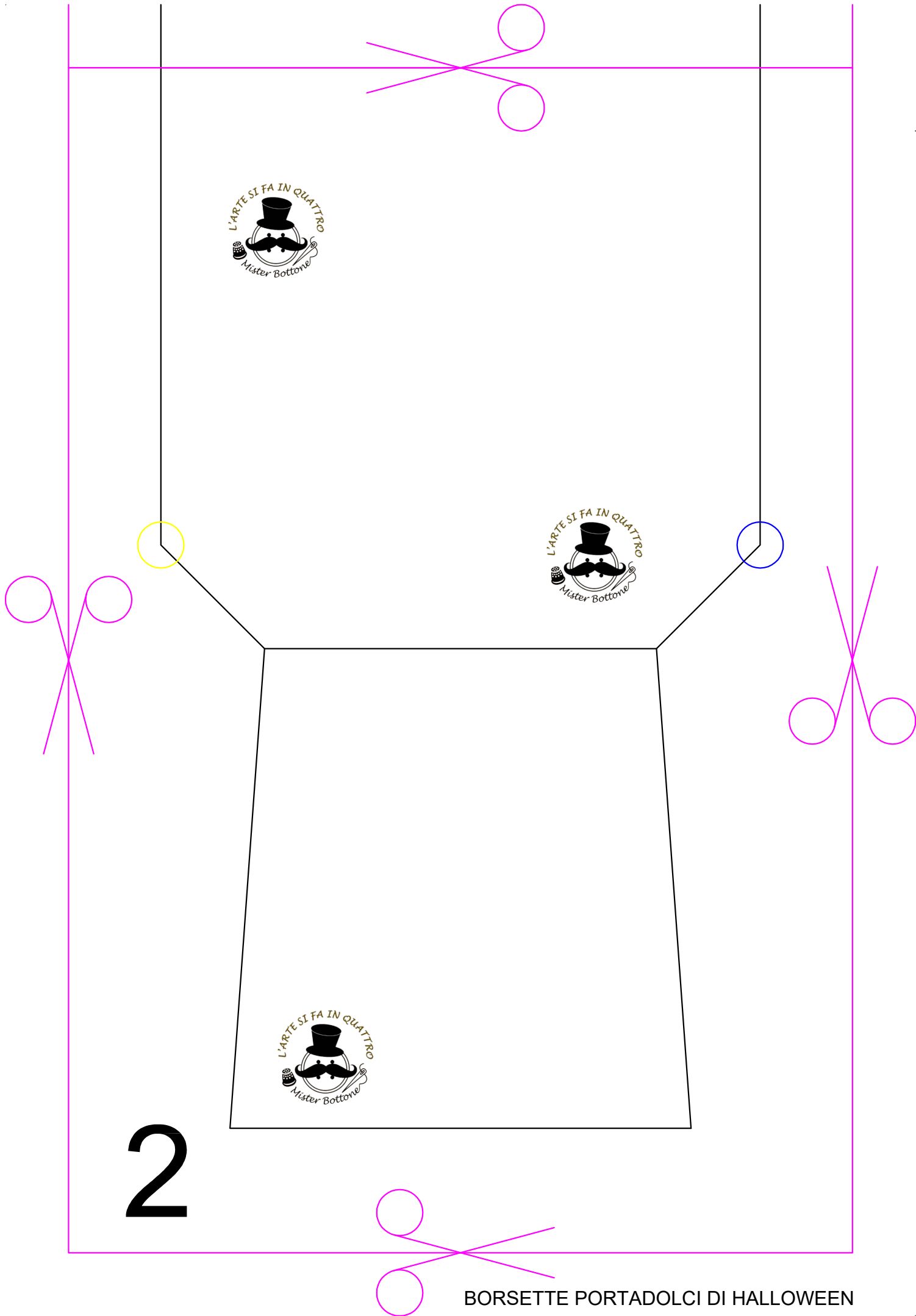


40cm

Disposizione delle sagome sul foglio di feltro 60x40 cm

1

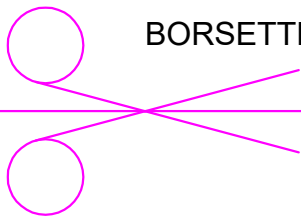
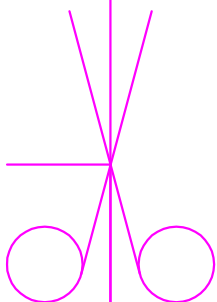
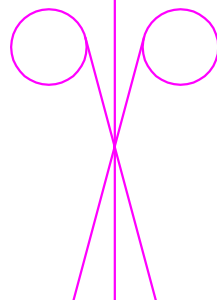
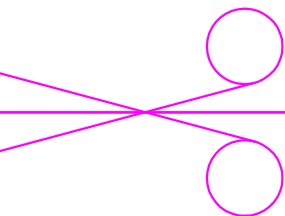




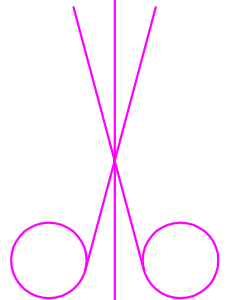
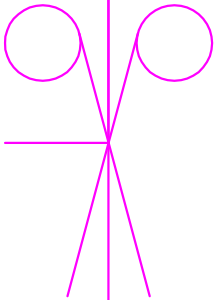
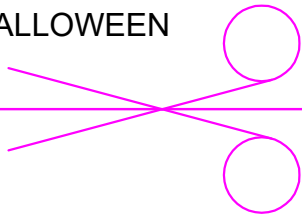
2

BORSETTE PORTADOLCI DI HALLOWEEN

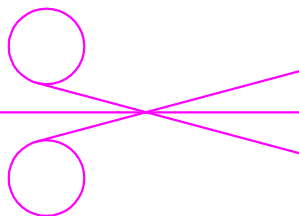
3



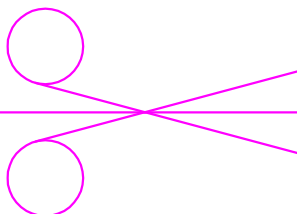
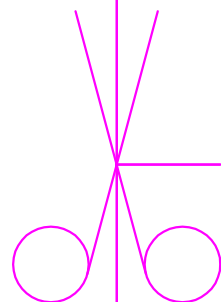
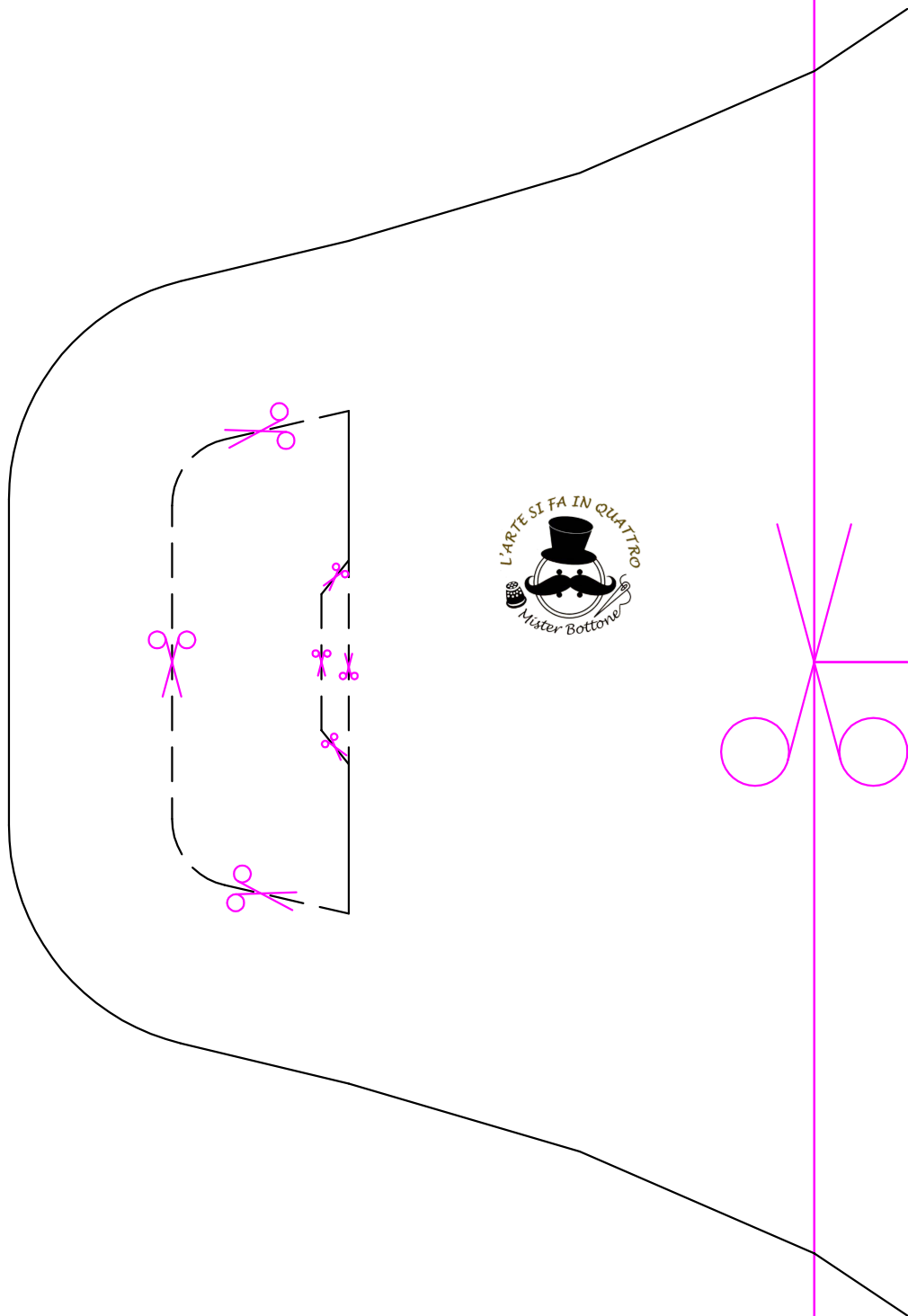
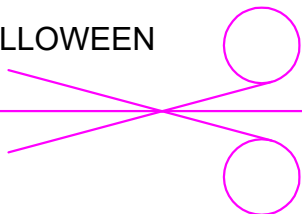
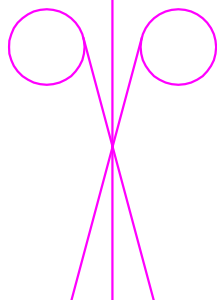
BORSETTE PORTADOLCI DI HALLOWEEN



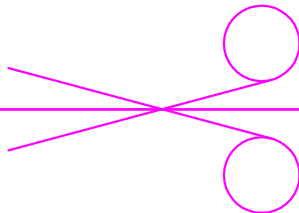
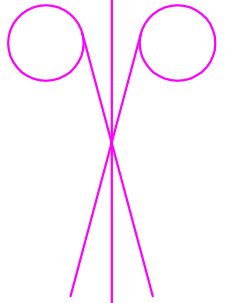
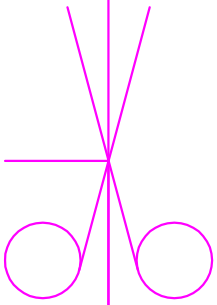
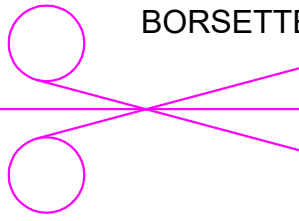
4



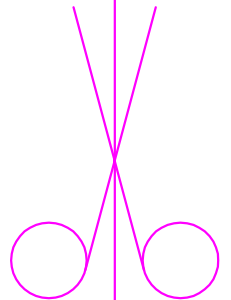
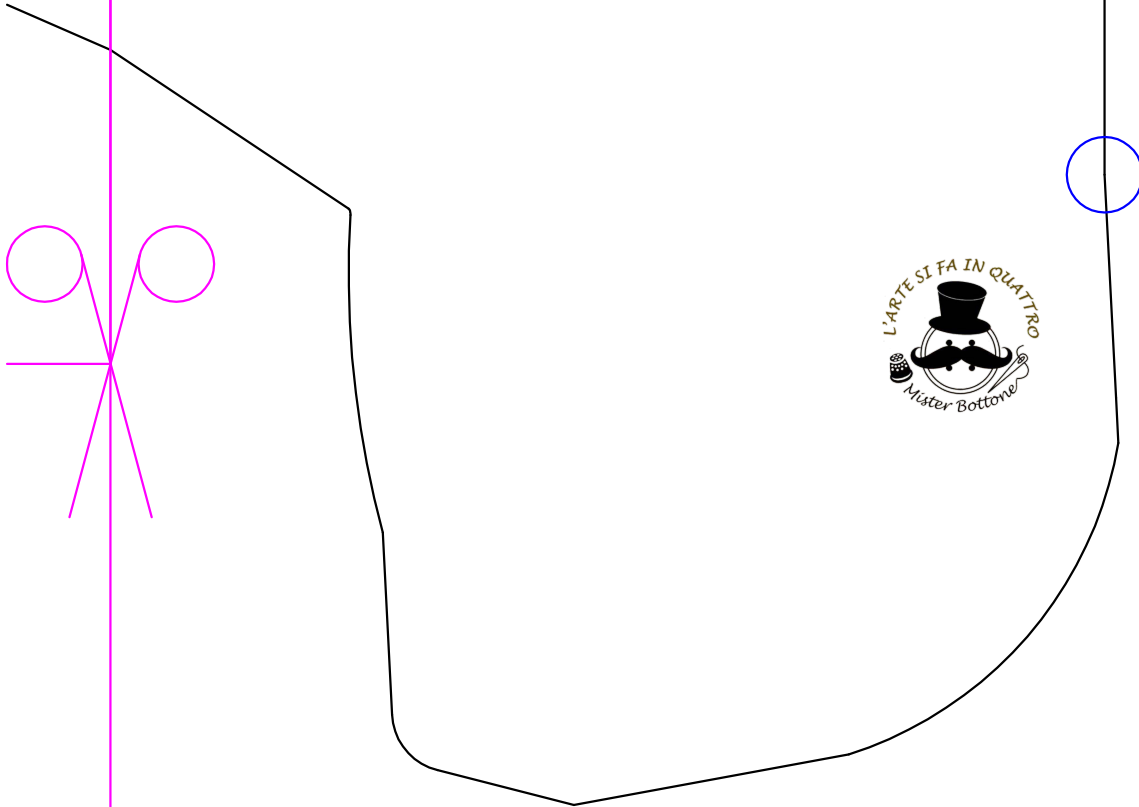
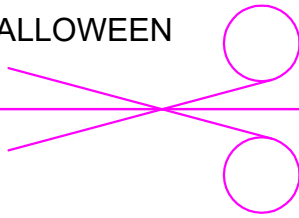
5



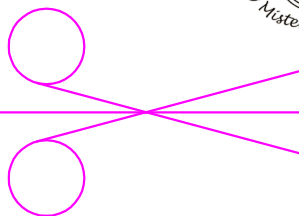
6



BORSETTE PORTADOLCI DI HALLOWEEN

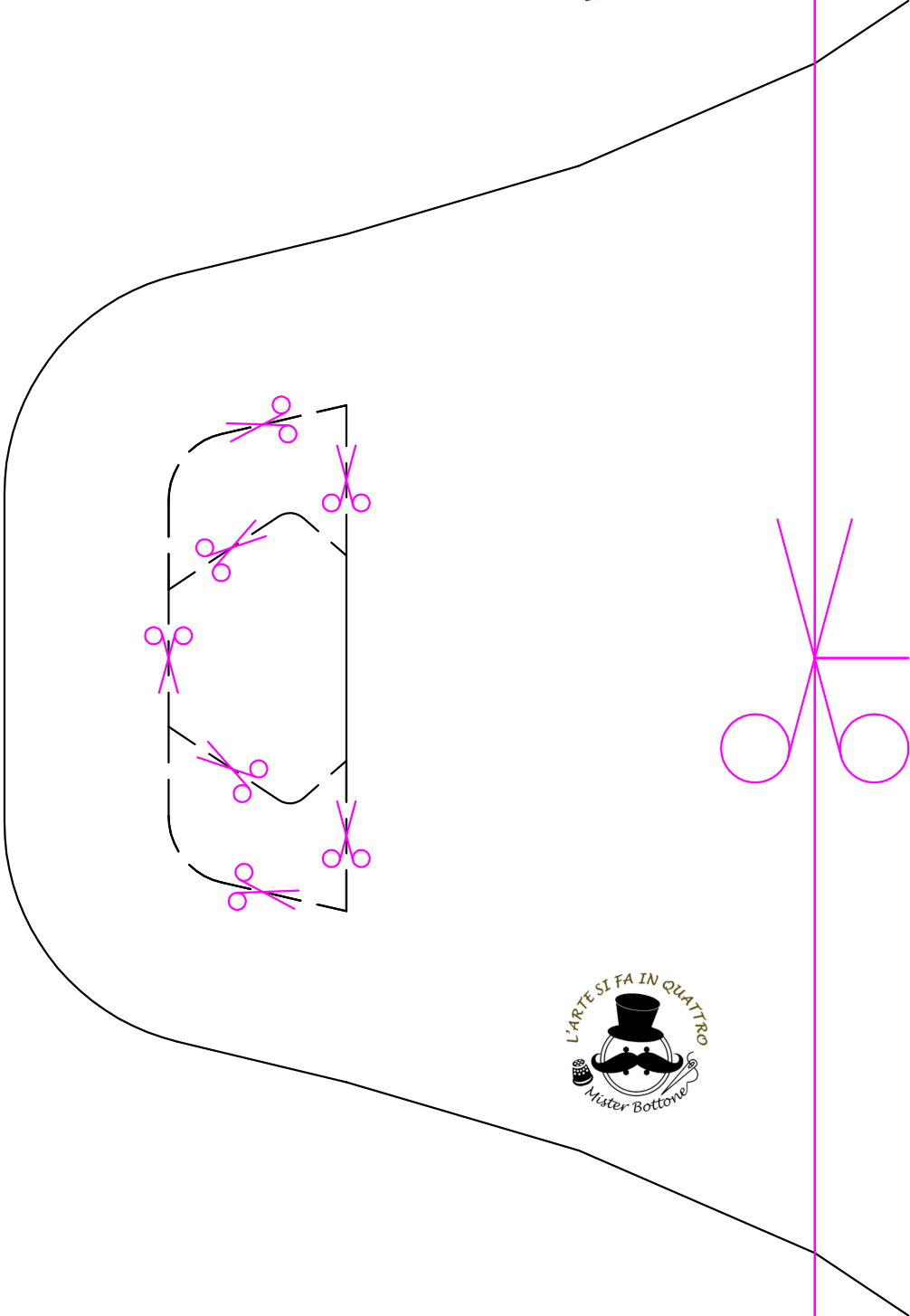
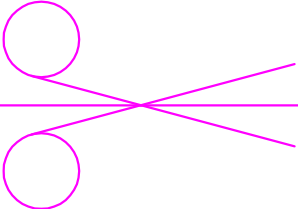
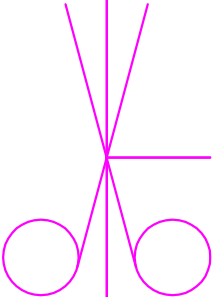
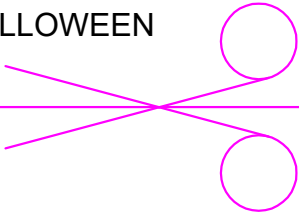
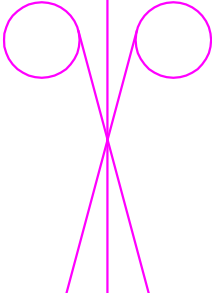


7



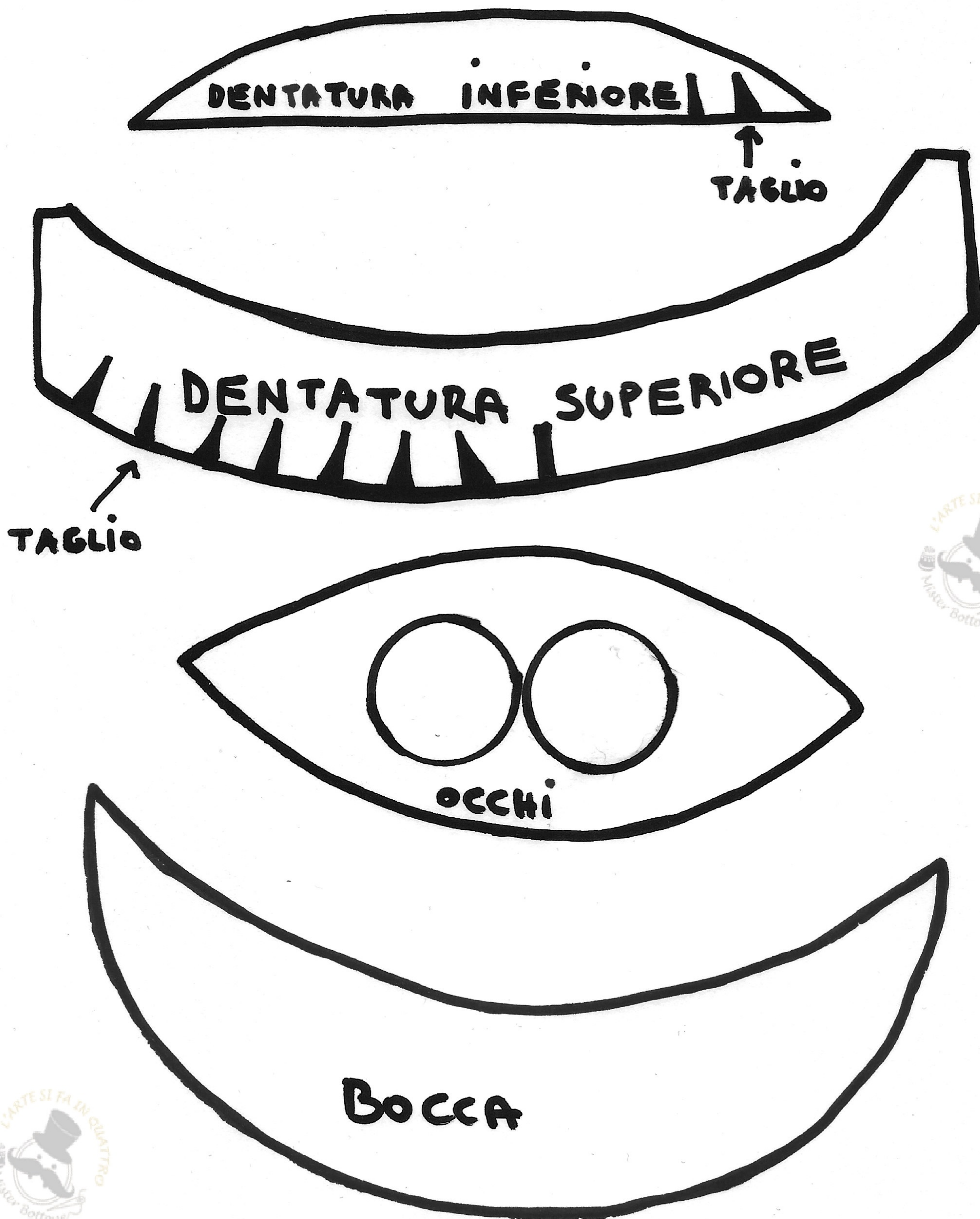
BORSETTE PORTADOLCI DI HALLOWEEN

8



BORSETTE PORTADOLCI DI HALLOWEEN

MUMMIA



BORSETTE PORTADOLCI DI HALLOWEEN

